

# REFERENCE DETAIL

COPYRIGHT © 2014 GALAXIA ELECTRONICS

All rights reserved. Reproduction in whole or in part is prohibited without the prior written consent of the copyright owner. The information presented in this document does not form part of any quotation or contract is believed to be accurate and reliable and may be modified without notice.

## ARCHITECTURAL LIGHTING

---

OFFICE  
COMMERCIAL  
RETAIL  
FACILITIES  
ENTERTAINMENTS  
ART



## Seoul Square Tower

Seoul Square Tower brought various media art to people with “Culture for All” concept by optimizing the geographical advantage of Seoul Train Station where there is a large floating population. By fixing LED lighting into the façade, it is made feasible to display unconstrained and efficient Media Art.

System Volume	99m (W) x 78 m (H) / 7,222 m <sup>2</sup>
Application Product	D3 Standard & Terracotta type Outdoor / Total 40,000 Nodes
On-site Installation	Oct. 2009, Korea

### Product

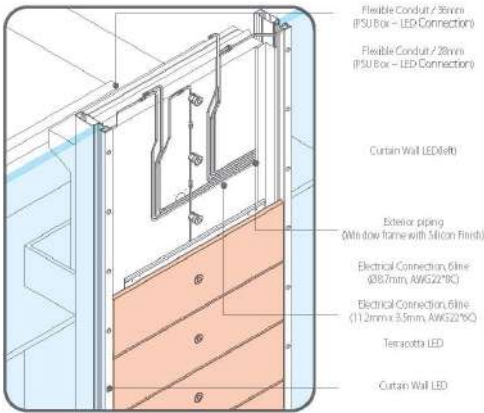


D3



D3 Terracotta type

### Detailed Design

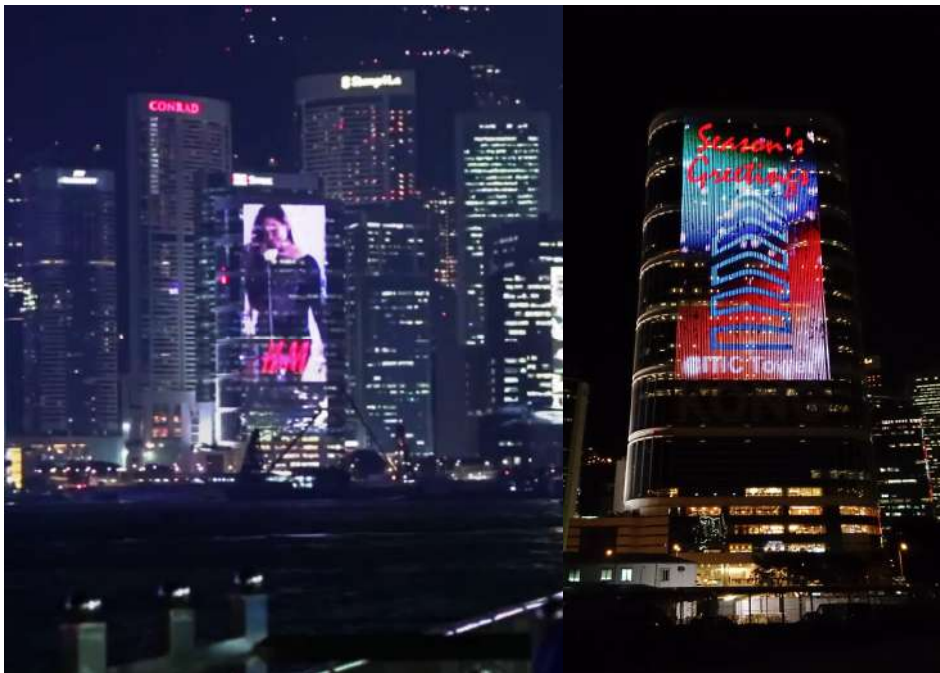


### Interactive



### Installation





Citic Tower

Citic Tower located at 'Hong Kong Victoria Harbour' with a large floating population wanted to have outdoor media advertisement on the building façade, for a temporary period of time, making the most of its geographical advantage. Therefore, we proposed a rental structure that LED is easily removable but not damaging the building. Then our proposal was completed as a new Media Façade.

System Volume	35m (W) x 72.8m (H)
Application Product	D3 [Pixel Pitch 500mm (W) x 200mm (H)], Outdoor / Total 25,915 Nodes
On-site Installation	Dec. 2013, Hong Kong

Product



Detailed Design



Installation







## The New Management Office Project of SOCAR (The State Oil Company of the Azerbaijan Republic)

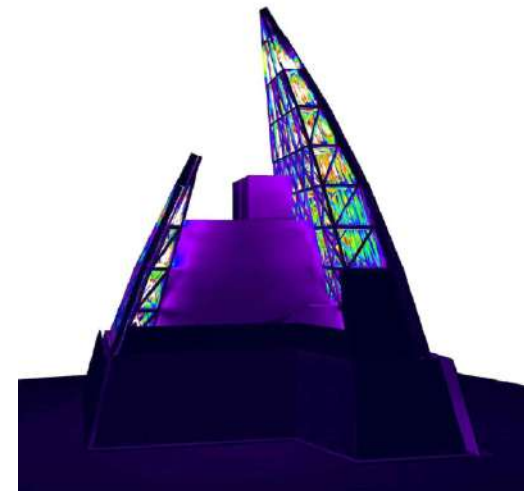
We built an image media system on the SOCAR building, Azerbaijan state-run oil company, to deliver diverse messages including the national icon of fire and wind. The roof section is displayed with flood light LED whose colour temperature can be adjusted. For the four façade sections, we grafted an interactive system to show images according to the environmental condition. On the podium, we installed linear type multi-media screen to secure more comfortable view right and to deliver more detailed image.

System Volume	38 m (W) x 200m (H) x 4 sides
Application Product	WP60_152ea, / Outdoor B15_2,619ea, B10_192ea, B5_177ea / Indoor Product(Linear type) for multi media screen_1,452ea / Indoor
On-site Installation	~ 2014, Azerbaijan (In Progress)

### Product



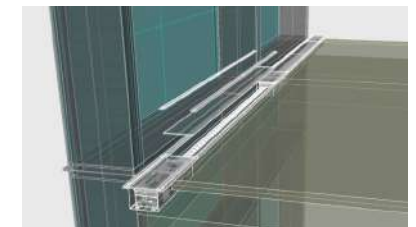
### Detailed Design



Roof



Podium



Main Tower



## Wataniya Telecom HQ

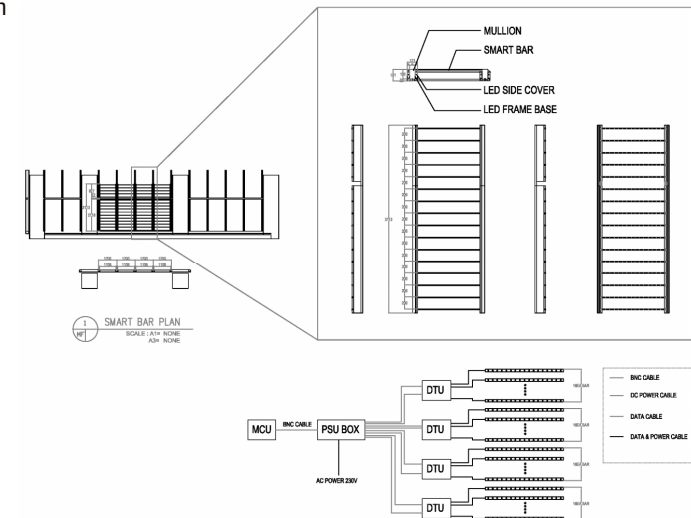
Wataniya Telecom, the first private telecom company in Kuwait with a leading position in the mobile market, intended to deliver diverse messages through their new office building. It is a lighting design that emphasizes the physical beauty of the façade and that is recognizable from all directions by installing LED on all 4 facades. It is also designed to have the optimum resolution from the main visibility range and to secure the viewing right of the workers in the building.

System Volume	32m (W) x 106m (H) x 4 sides
Application Product	Smart Bar_21,184ea, B5_204ea, B4_324ea / Outdoor
On-site Installation	Jan. 2014, Kuwait

### Product



### Detailed Design



### Installation





## Hyosung B-Tower

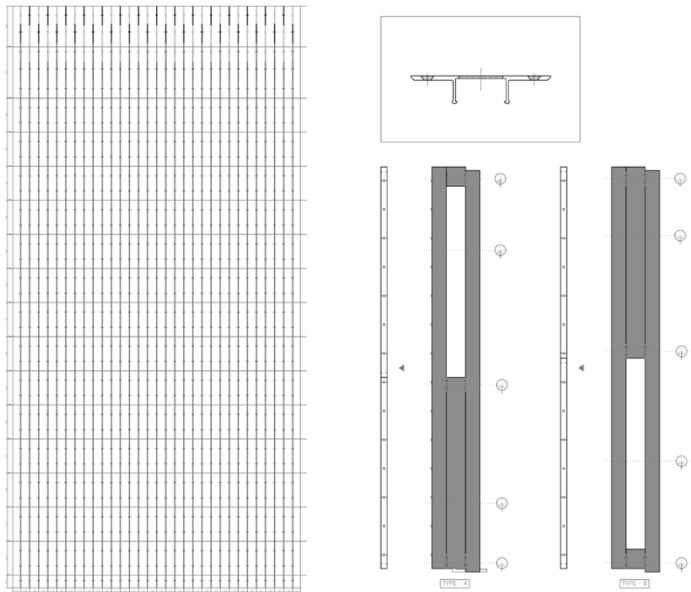
It is a light source & building integrated system that light source is mounted into the exterior louver. Also, it is the first reference in Korea that all 4 facades of a high building are installed with Media Façade. View is available from all directions and stereoscopic display is also available. Moreover, Hyosung B-Tower is considered to be a leading environmentally-friendly building for using LED for both interior and exterior light.

System Volume	35m (W) x 77m (H) x 4 Sides
Application Product	D3A, Outdoor / Total 31,372(124x253)Nodes
On-site Installation	Nov. 2011, Korea

### Product



### Detailed Design



### Installation







## YTN Newsquare

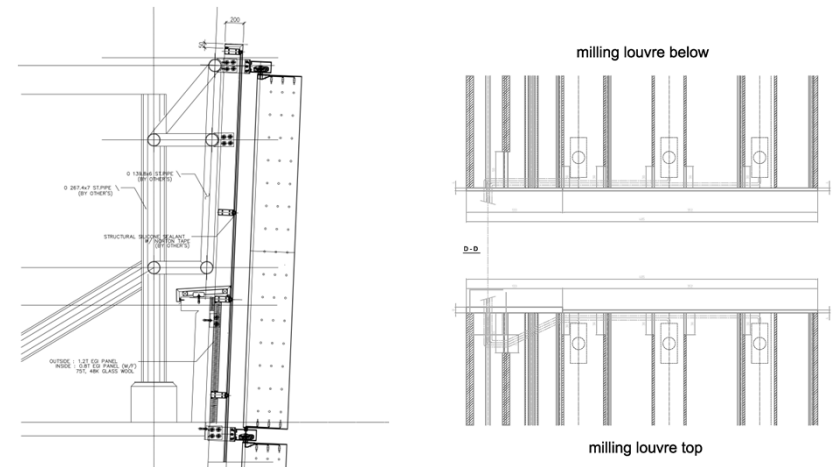
The 24 hour news channel YTN Media Center is located in Sangam-dong DMC (Digital Media City). The design shows the harmony of electric louvre and LED Light. During the day time, the louvre is used as awning and during the night time it is used as media façade delivering diverse information images.

System Volume	13.7m (W) x 74m (H), 21m (W) & 55.5m (H)
Application Product	D3, Outdoor / Total 19,368 Nodes
On-site Installation	Nov. 2013, Korea

### Product



### Detailed Design



### Installation







## NC Soft R&D Center

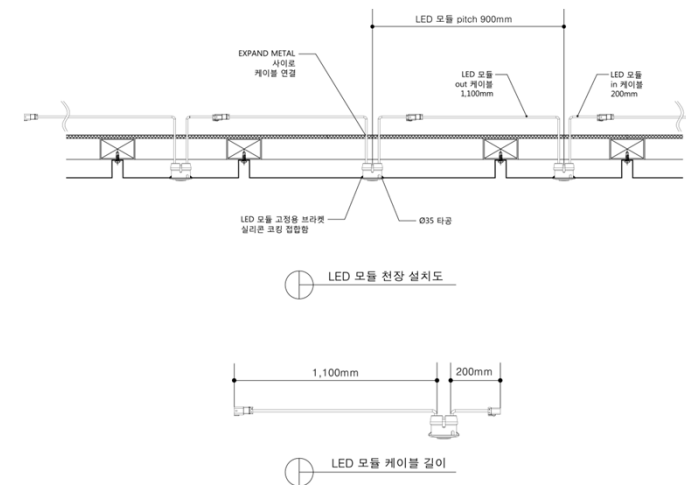
We built a cultural facility for everyone to watch on the bridge which links N Tower and C Tower of NC Soft R&D Center. Installation of removable mounting type LED enables easy maintenance and neat finishing.

System Volume	58.5m (W) x 37.8m (H)
Application Product	D3A Terracota Type, Outdoor / Total 3,032 Nodes
On-site Installation	Apr. 2013, Korea

### Product



### Detailed Design



### Installation





## SeenTec Tower

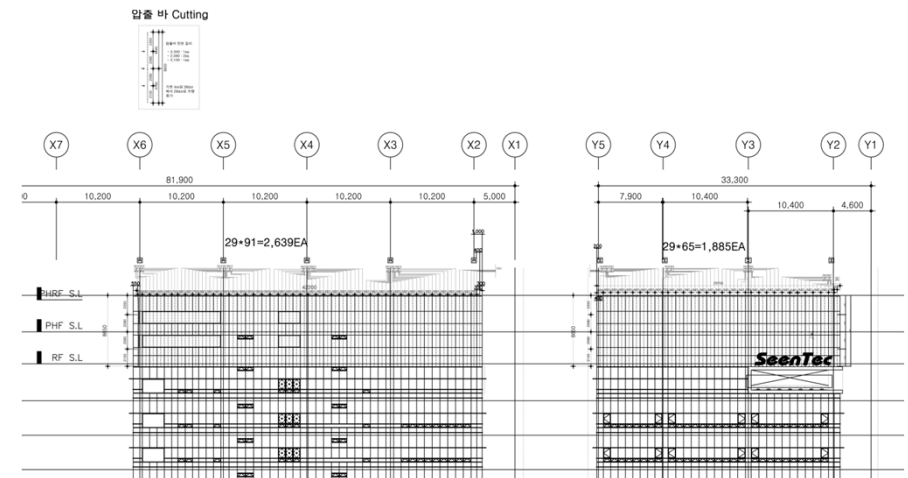
SeenTec Tower, being the first building to have media façade installation in the region, had media façade installed on the front and left side of the roof to secure recognition from long distance away. By utilizing digital media as means of various graphic and message delivery, SeenTec Tower could differentiate itself from nearby buildings and promote itself naturally.

System Volume	71m (W) x 8.7m (H)
Application Product	D3, Outdoor / Total 4,340 Nodes
On-site Installation	Sep. 2010, Korea

### Product



### Detailed Design



### Installation





## POSCO E&C Tower

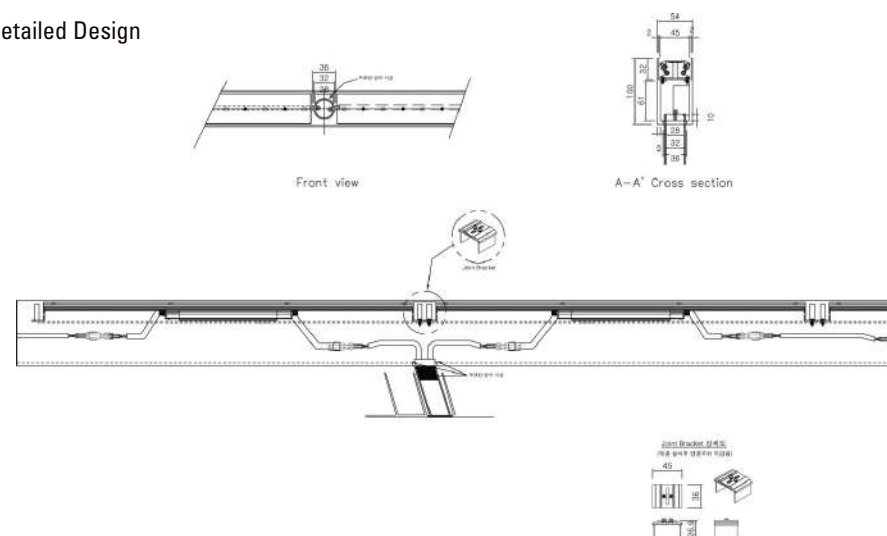
POSCO E&C Tower, with the architectural beauty of a crystal shape, has changed the skyline and become a landmark in Songdo International Zone. At night, simple but powerful light image emphasizes the diamond shaped architectural beauty of the tower.

System Volume	Total 1.66 km
Application Product	B4 [600mm (L) x 45mm (W) x 29mm (H)], Outdoor / Total 2,769ea
On-site Installation	Nov. 2010, Korea

### Product



### Detailed Design



### Installation







## Meritz Fire & Marine Insurance, Pusan

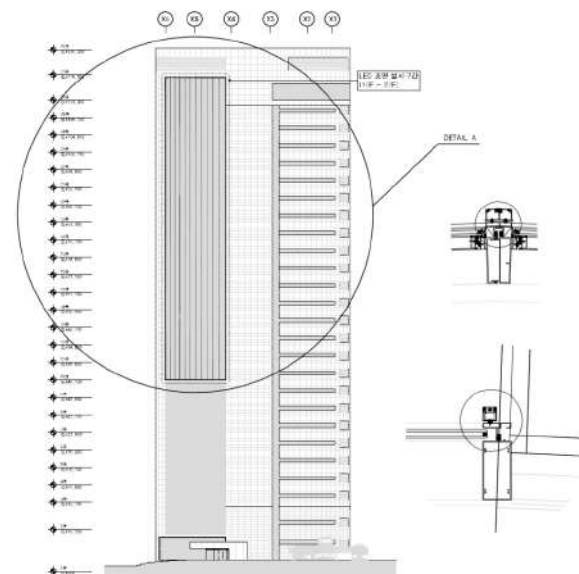
Meritz Fire & Marine Insurance located near Pusan port wanted to publicize their images with regional features through Media façade. The quantity of LED product was minimized to keep the original form of the building (13 x 297 pixel) and the display effect was maximized with optimal contents. We expressed happy, vibrant and dynamic image of Pusan by visualizing the motto of slogan of the district, and delivered the image of the company by using Meritz' symbol, the red color.

System Volume	18m (W) x 73m (H)
Application Product	D3, Outdoor / Total 3,800 Nodes
On-site Installation	Dec. 2011, Korea

### Product



### Detailed Design



### Installation







## LIG Insurance, Dae-gu

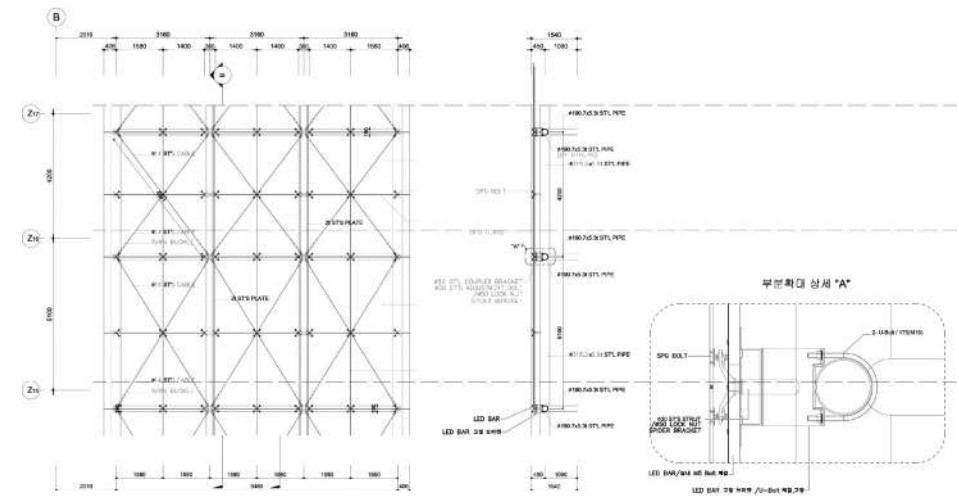
To reinforce the characteristic of the company, the Media Façade was applied to the front side of glass elevator For LIG Insurance Dae-gu Office completed in 2010. The structure frames and LED with vertical installation was specially adapted for vertical image expression and this unique design emphasized growth of LIG Insurance.

System Volume	8.6m (W) x 69m (H)
Application Product	D3, Outdoor / Total 20,000 Nodes
On-site Installation	Feb. 2010, Korea

### Product



### Detailed Design



### Installation





## I-Tower, Song-do

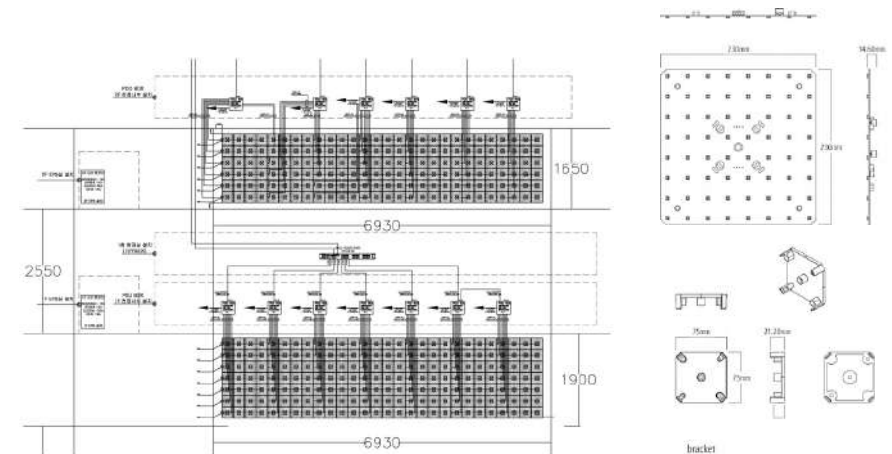
I-Tower located in IFEZ (Incheon Free Economic Zone) is the biggest eco-friendly building equipped with renewable energy facilities such as geothermal, solar power, etc. With the combination of interior and LED, two Media wall were finished with BARIRISOL and applied M46, which is lightweighted and easy to install were used on the walls of stair case. These Media walls provide various advertising contents and information.

System Volume	6.93m (W) & 3.55m (H)
Application Product	M64, Indoor / Total 364ea
On-site Installation	May. 2013, Korea

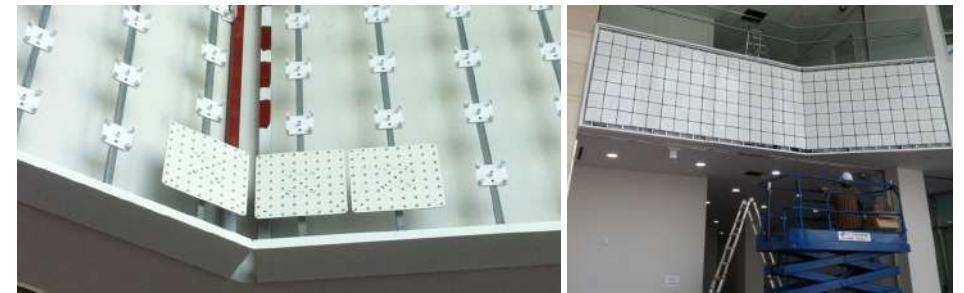
### Product



### Detailed Design



### Installation





## Renaissance Doha City Center Hotel

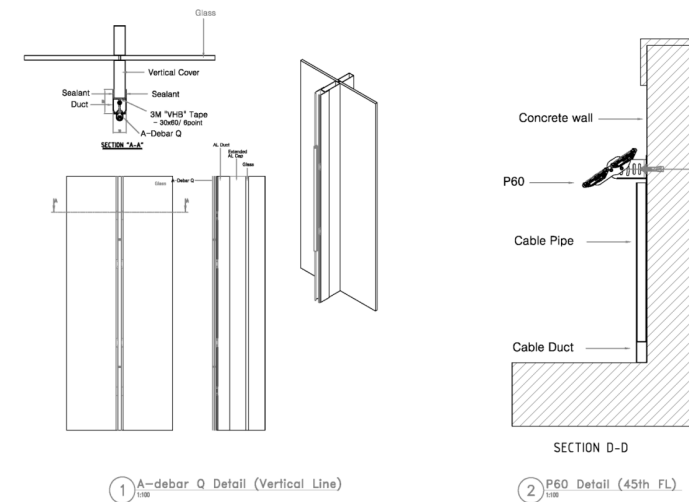
It is a LED exterior lighting system which links 5 Renaissance Hotel buildings in Doha, Qatar. The floodlight onto the top section describes the scale of the building and at the same time, the lighting which follows the transom and louver shows diverse colour and unique display for it can be controlled in pixel unit. Besides, it is expected to build a large single media zone linking with other hotels. It will provide a unique and unforgettable landscape to visitors from all over the world.

System Volume	45m (W) x 177m (H) x 5 buildings
Application Product	D3_21,000 Nodes, A-debar_4,000ea, P60_1,000ea / Outdoor
On-site Installation	~ 2013, Qatar (In Progress)

### Product



### Detailed Design



### Installation







## LOTTE FITIN

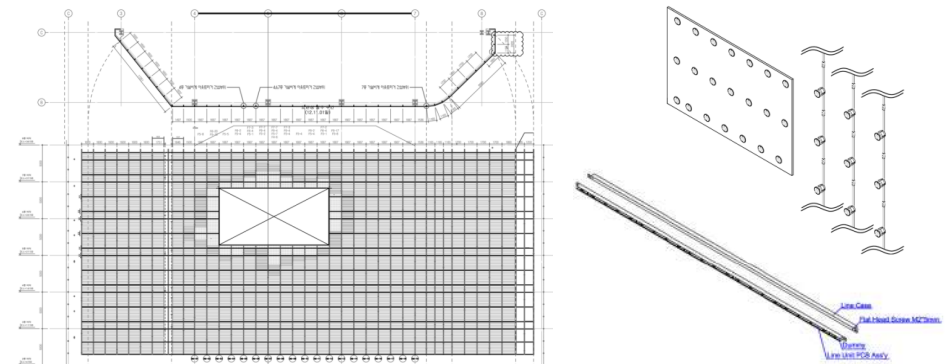
The renovation of an existing old building gave it rebirth as a new fashion mall with the identity of Lotte. It guides the visitors for more comfortable shopping by delivering various images and messages utilizing media façade and high resolution LED screen simultaneously or separately. Unusually, it delivers more efficient media by synchronizing media façade and sound. The new LOTTE FITIN tower is expected to become a new attractive spot in the design and fashion center of Dongdaemun.

System Volume	60m (W) x 30m (H)
Application Product	D3 Terracotta type_6,586 Nodes / Outdoor, Linear Vision_4,398ea / Indoor
On-site Installation	Mar. 2013, Korea

### Product



### Detailed Design



### Installation







Burberry, Kerry Centre, Shanghai

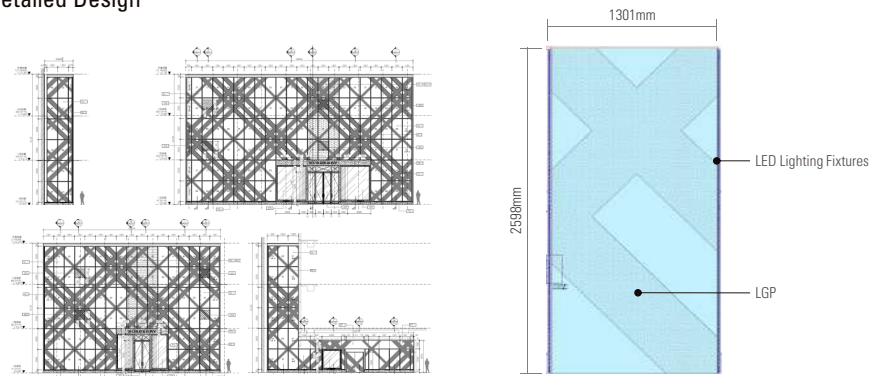
It is a lighting design that unit control & dimming available White LED come together with Burberry mark patterned Light Guide Panels. The harmony of elaborated pattern and light displays a charming atmosphere. The image contents are realized with weather concept such as rain, snow, wind and etc.

System Volume	72.8m (W) x 15.6m (H)
Application Product	Customize Product, Indoor / Total 508ea
On-site Installation	Apr. 2014, China

Product



Detailed Design



Installation





## SAMSUNG D'Light (Experience Zone of Samsung Electronics)

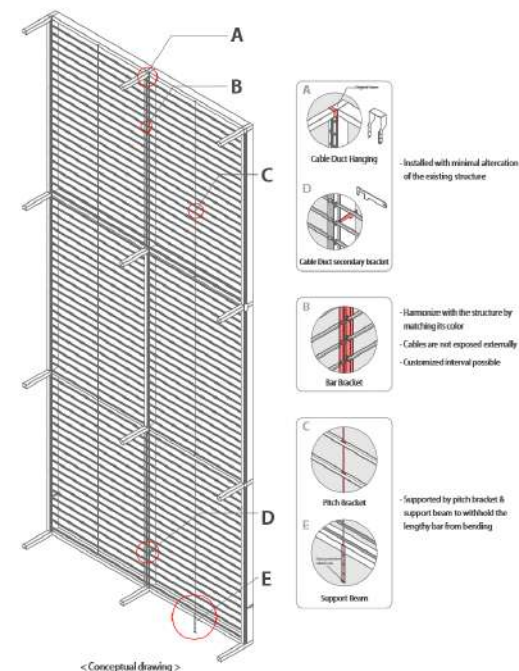
Samsung D'Light, where you can experience Samsung Electronics' high-tech products, intended to deliver various messages to express the image of a pioneer of state-of-the-art technology. We built an image system which can show diverse and dynamic images onto the building glass façade's LED Media Façade. It also plays its role as an urban media art gallery which brings city culture and digital world.

System Volume	36m (W) x 13.7m (H)
Application Product	Smart Bar, Indoor / Total 1,500ea
On-site Installation	Jul. 2011, Korea

### Product



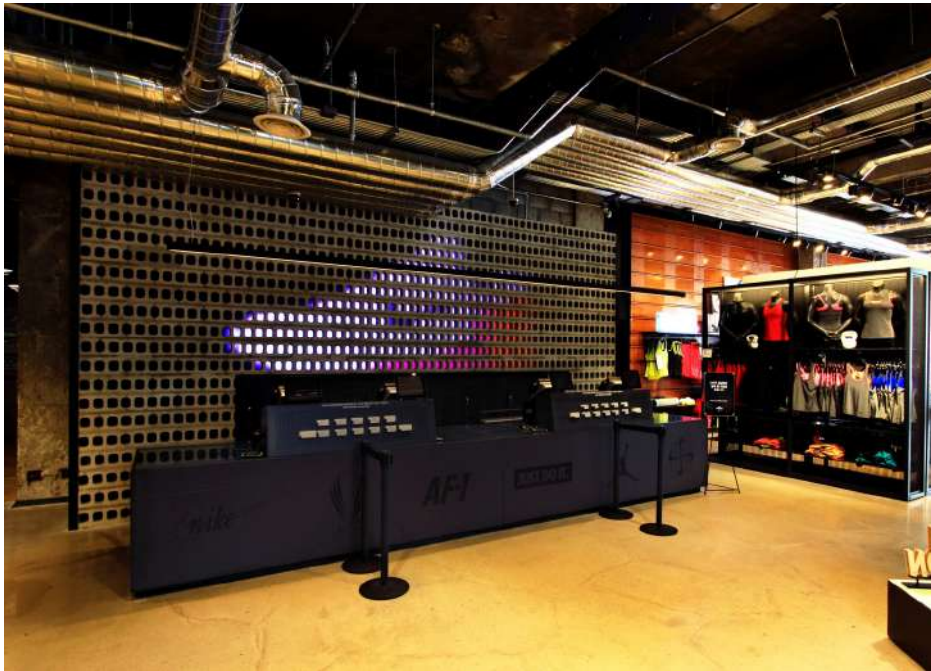
### Detailed Design



### Installation







## Nike, Gangnam

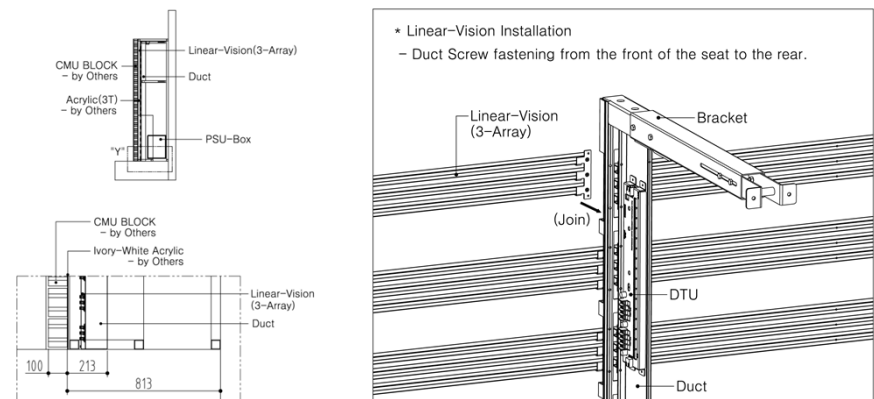
The newly opened Nike Gangnam is Nike's flagship store which embraces the innovation and energy of the brand. Located on Gangnam street, it is the largest sports brand store in Korea with 1,800m<sup>2</sup> space when combining all 3-levels. The special characteristic of this store is the interactive introduction of the merchants using the distinguished LED wall installed on level 1 and 2, which makes the store one of the most digitalized among the Nike stores worldwide.

System Volume	6.2m (W) x 3.24m (H)
Application Product	Linear Vision, Indoor / Total 270ea
On-site Installation	Jun. 2014, Korea

### Product



### Detailed Design



### Installation





## Publicis Drugstore

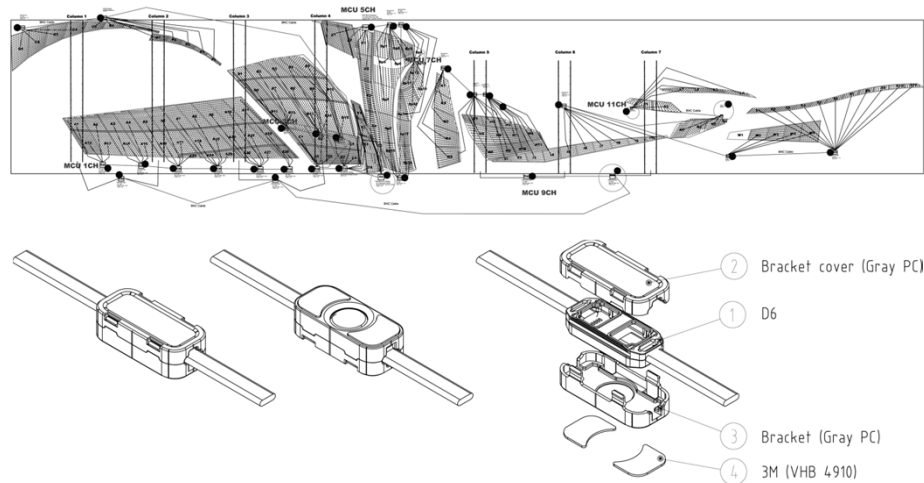
Located on Champs-Elysees avenue, the Publicis Drugstore is the first building that adopts media façade on this historical avenue. LED fixtures were attached on the metaphysical glass structure of the building exterior using brackets and adhesive tape for construction. The flexibly positioned LED pixel displays images with mapping system on each pixel, and Automatic Detective Backup System is applied for stable operation by automatic recovery from any problem occurrence.

System Volume	114m (W) x 19m (H)
Application Product	D6, Outdoor / Total 17,115 Nodes
On-site Installation	Jun. 2014, France

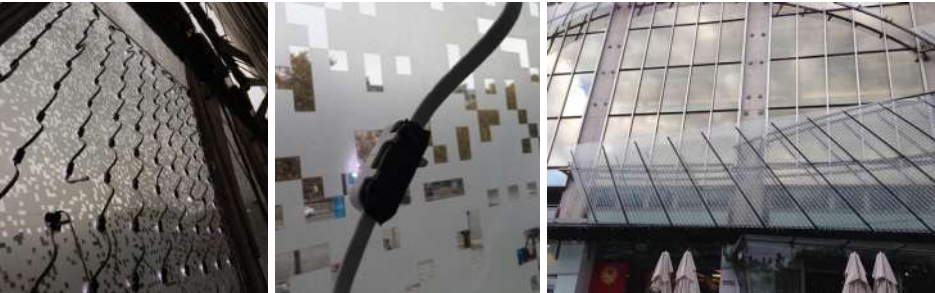
### Product



### Detailed Design



### Installation





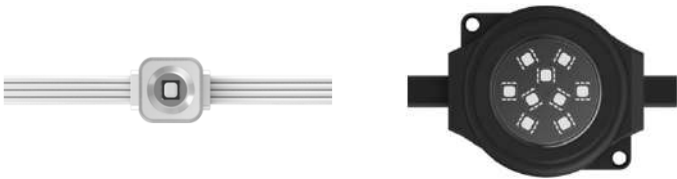


### Kids Cavern, Sands Cotai Central

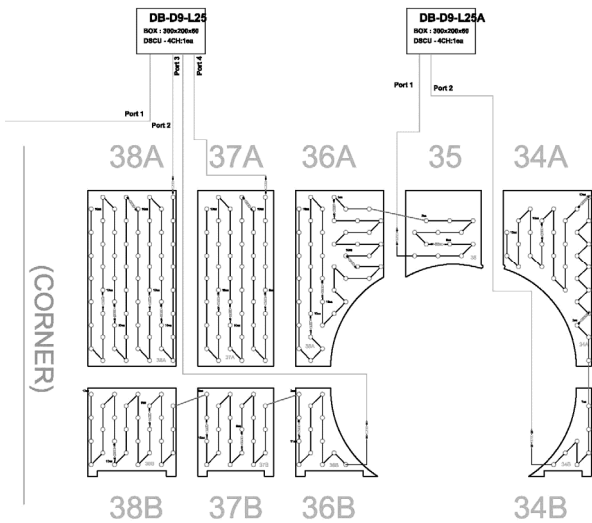
Sands Cotai Central is the largest resort in Macau featuring three hotels. Kid Cavern is one of the luxury shopping mall located in Sands Cotai Central and dedicated to children’s wear, toy, game and others. LED display of various colors on the wall that have circle entrances like cave stimulate children’s sensitivity and curiosity and it entice customers to enjoy shopping.

System Volume	100m (W) x 4m (H)
Application Product	D1 3,158 Nodes, D9 4,072 Nodes / Indoor
On-site Installation	Jan. 2013, Macao

#### Product



#### Detailed Design



#### Installation



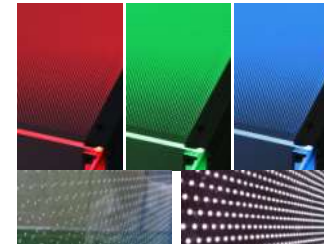


## Floating island

Floating Island is the nation's first-ever artificial island that floats on the surface of Han-River. The Island is comprised of three flower-themed such as a flower in full bloom, a flower bud and seed. For the Island 1, we used the Light Guide Plate (LGP) to form the flower in full bloom and to illuminate it colorfully. You can experience the unique art such as light and media through this fantastic view. For Island 2 and 3, architectural Lightings that fit with each concept of islands are installed. The lighting systems of three islands can be operated individually as well as by integrated control system.

System Volume	Total 9,995m <sup>2</sup> (Island1 5,490m <sup>2</sup> , Island2 3,427m <sup>2</sup> , Island3 1,078m <sup>2</sup> )
Application Product	LED LGP(Light Guide Plate) 1,596ea / Indoor, B5_271ea, B4_1,249ea, P60_175ea, Point LED_28ea / Outdoor
On-site Installation	May. 2011, Korea

### Product

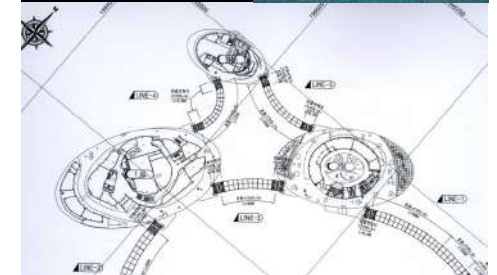
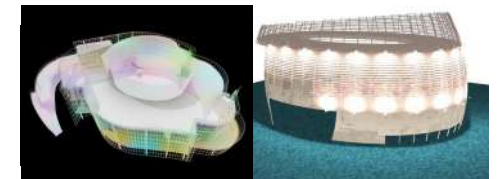
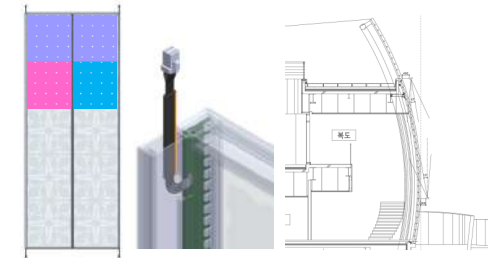


**INSIDE**  
Maximize outward view by  
minimizing light leakage  
under **10%**

**OUTSIDE**



### Detailed Design



### Installation







## MIO Corporation, Tennoji station

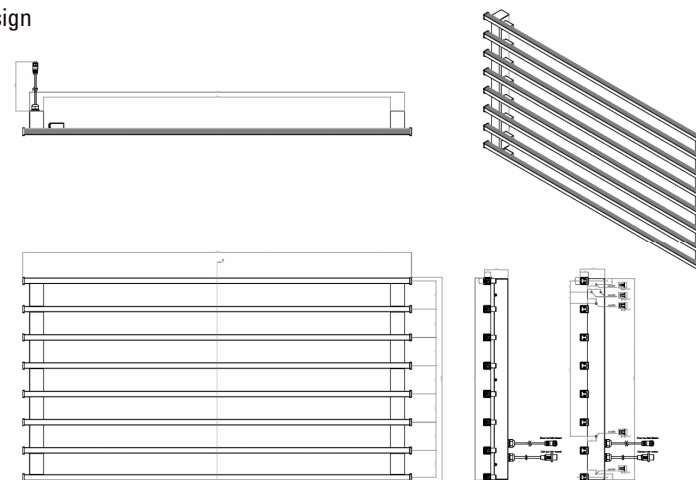
Tennoji Station is the third largest station in Osaka. The station is surrounded by many large industrial facilities, shopping malls and educational facilities. For MIO Corporation, we installed large scale Media Façade of 35(W) x 15(H) meter ,being the first large format Media Façade in Japan, and the system is built to automatically control the brightness at day and night time using Time Scheduler. In addition, the building has become a landmark by the convergence of media façade and architectural lighting.

System Volume	35m (W) x 12m (H)
Application Product	Linear type-Unit [1,380mm (W), 8bars per Unit], Indoor & Outdoor / Total 345units (Bar: 2,760ea)
On-site Installation	Jan. 2013, Japan

### Product



### Detailed Design



### Installation



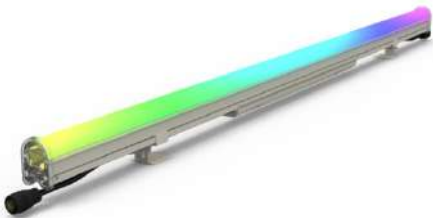


### Kai-Tak Cruise Terminal

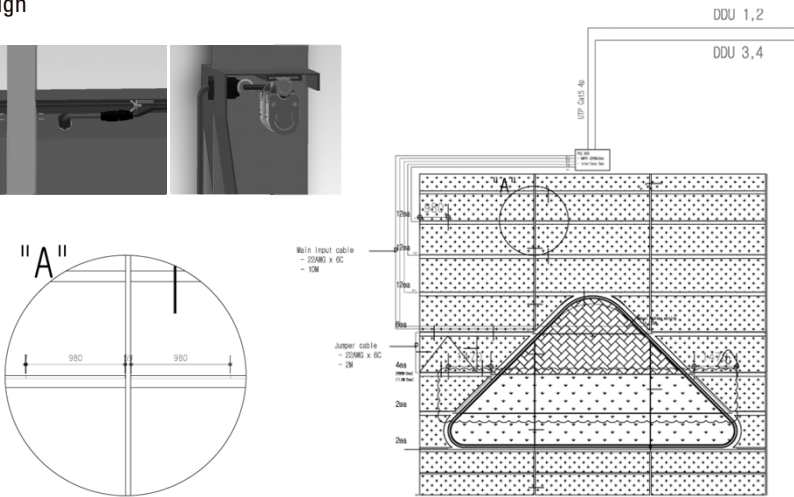
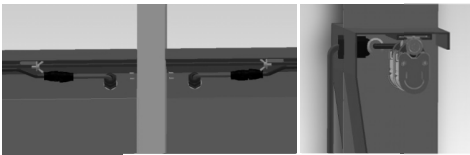
Kai-Tak Cruise Terminal is a huge cruise terminal which is able to accommodate two mega cruise ships with a length of 360 meters. The architectural lightings installed on horizontal line emphasizes the huge scale of Terminal and colorful LED display stimulates tourists' emotion.

System Volume	620m (W) x 12m (H) x 2 Sides
Application Product	A-debar Diffuser 1000mm, Outdoor / Total 5,688ea
On-site Installation	Jan.2014, Hong Kong

#### Product



#### Detailed Design



#### Installation







## Union Tower

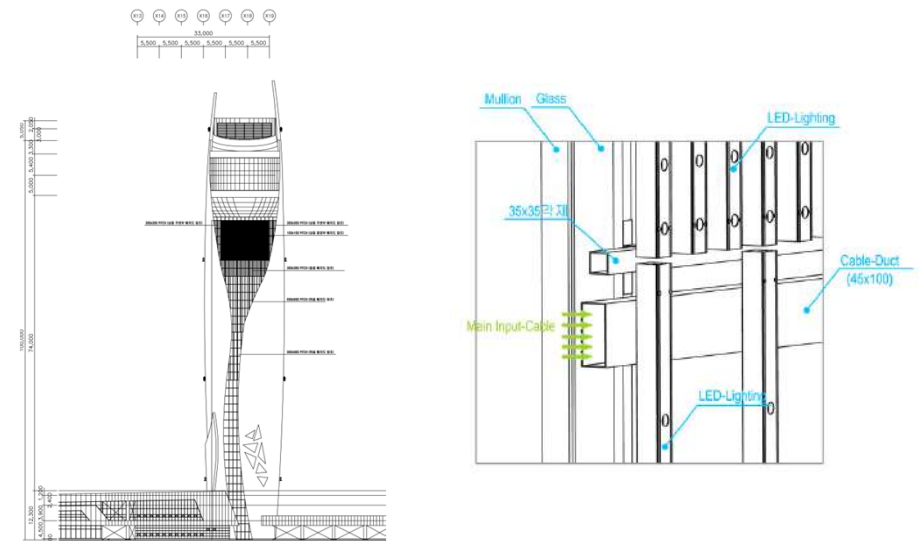
Union Tower is the nation's first-ever eco-friendly facility complex. This building is comprised of recycling and waste disposal facility in the basement and the sports, leisure facilities and park on the ground. Visitors can enjoy the view of Mt. Kumdan and Mt. Yebong and Han-river from the observation deck 105 meter higher. The distances between lightings of Media Façade varies for the natural harmony between elevation design of the building and Media Façade (100mm ~ 900mm). 'Cycle of Nature' which means the entire resources from nature (wind, water, sky) go back to nature is the theme of display. The LED system is equipped with sensor installed on the top of building for detecting temperature, wind direction and speed and it allows visitors to share the weather information in real time.

System Volume	17.7m (W) x 40m (H)
Application Product	D3, Outdoor / Total 12,500 Nodes
On-site Installation	Jul. 2014, Korea

### Product



### Detailed Design



### Installation





## Clean Center

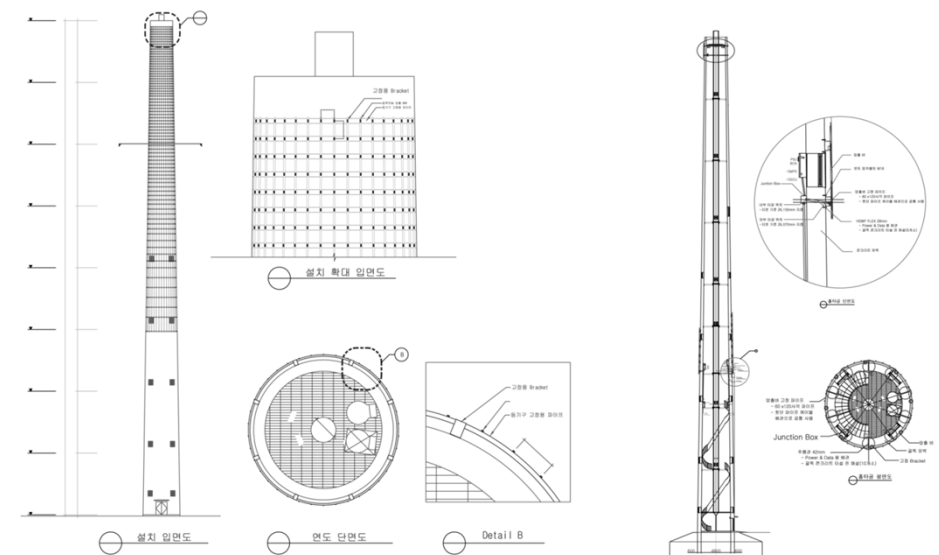
The Clean center in Namyangju city changes its image from waste disposal facility to familiar place to the people. To make it possible, we made the chimney to a piece of art that flows beautiful color images to provide people with fun and message with the interactive system that displays temperature and season.

System Volume	Ø5.2m x 80m (H)
Application Product	D3A, Outdoor / Total 2,926 Nodes
On-site Installation	Jan. 2012, Korea

### Product



### Detailed Design



### Installation





## Vision Tower, Gachon University

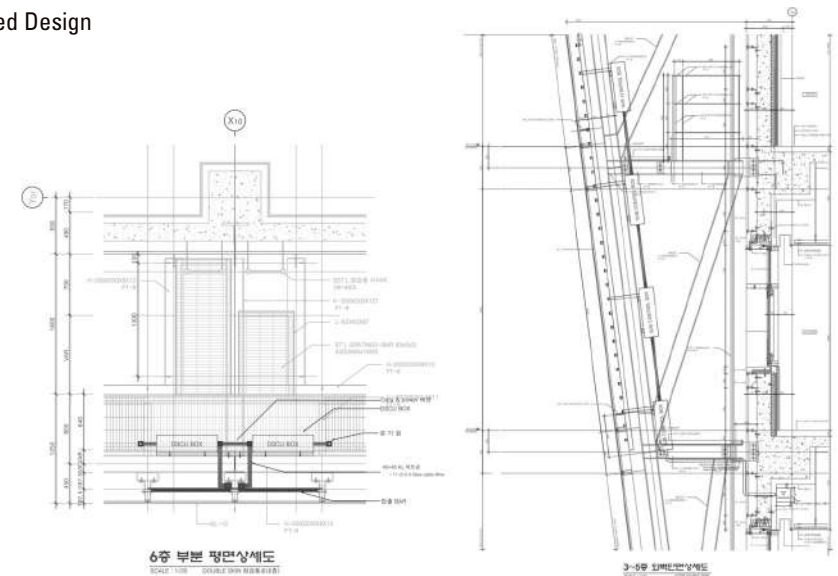
Gachon University which aims to be a global college added media skin on their symbol Vision Tower, which is Korea's largest underground campus with electrical information library. Using double skin on the façade, it harmonizes the building and the lighting. Displaying emotional art images for each season, it improves the surrounding sights and proposes the vision of the college by introducing the educational policy and departments by animation.

System Volume	50m (W) x 13.4m (H)
Application Product	D3, Outdoor / Total 13,600 Nodes
On-site Installation	Jul. 2010, Korea

### Product



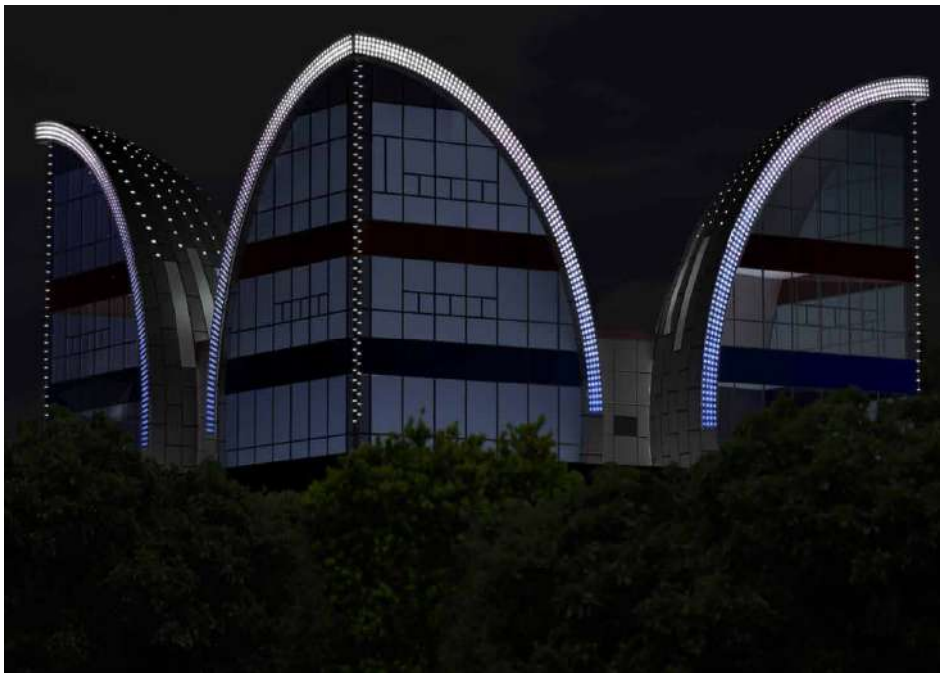
### Detailed Design



### Installation







Isabu Saja Park

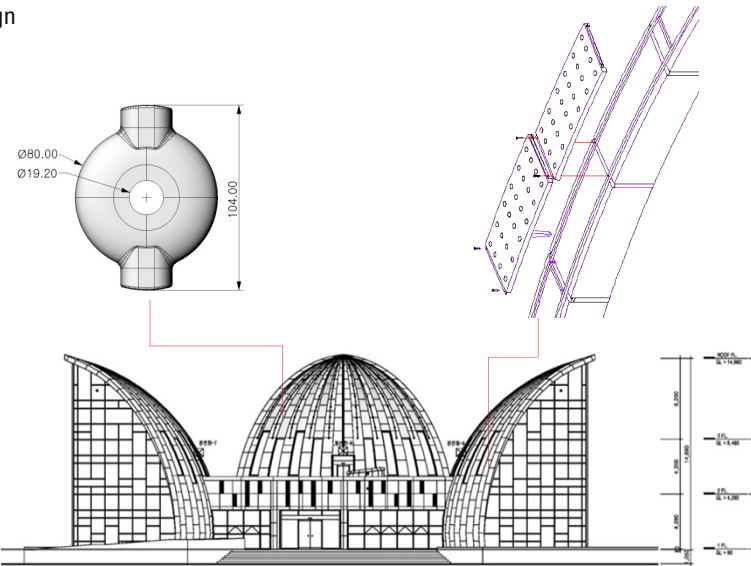
The family park conceives the pioneering spirit of general Isabu in Shilla dynasty. The visitors can also enjoy the beautiful scenery of the east sea. We emphasized the building's night silhouette by installing LED lighting on aluminum panel on the observatory's external wall. It is now integrated with surrounding architectural lighting and shows various fun points to the visitors.

System Volume	40m (W) x 14m (H)
Application Product	D3, Outdoor / Total 3,700 Nodes
On-site Installation	Aug. 2011, Korea

Product



Detailed Design



Installation



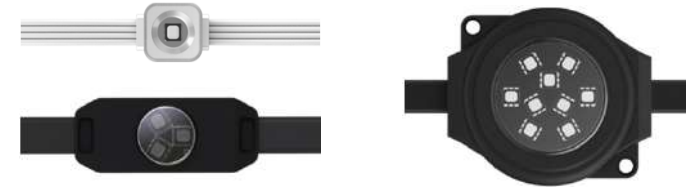


## Madagascar Live, Samsung Everland Resort

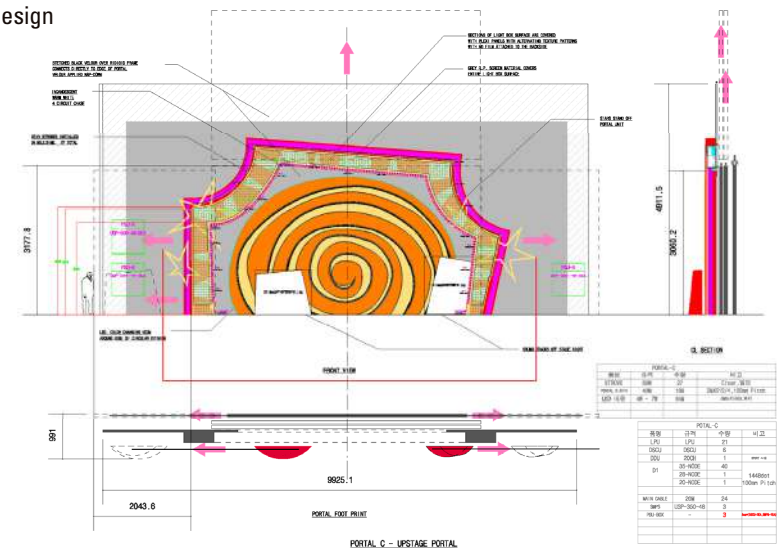
It is Korea's first theme park type musical that the global animation producer Dream Works and Samsung Everland jointly produced. Most of the lighting on the stage was made by LED display system, therefore it could perform fancy stage based on the color image display.

System Volume	20m (W) x 10m (H)
Application Product	D1_5,930 Nodes, D3_580 Nodes, D9_1,045 Nodes, Etc.1,000ea / Indoor
On-site Installation	Jul. 2012, Korea

## Product



## Detailed Design



## Installation







## Dream of Laciun, Samsung Everland Resort

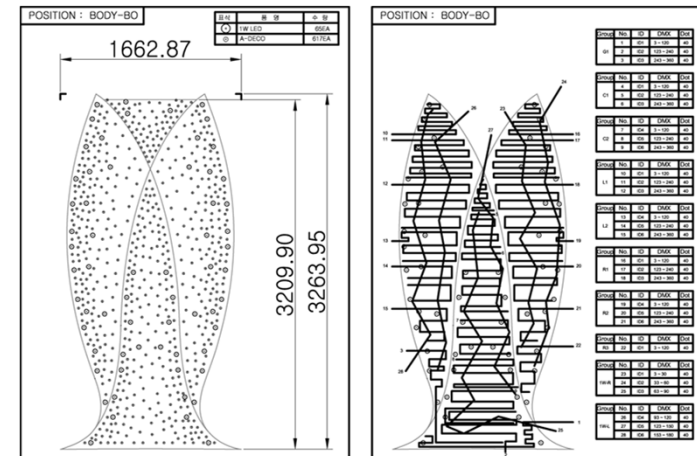
It is one of a stage sets in Multi Media Fantasy Show in Everland with the dimension of 28 meter wide and 10 meter high in the shape of phoenix. With the combination of various operating and LED display systems, it can make various motions and add dramatic effect of the show.

System Volume	28m (W) x 10m (H)
Application Product	A-deco system, Outdoor / Total 28,000 Nodes
On-site Installation	Apr. 2009, Korea

### Product



### Detailed Design



### Installation







## Disney sea “Fantasmic” Show, Tokyo Disneyland

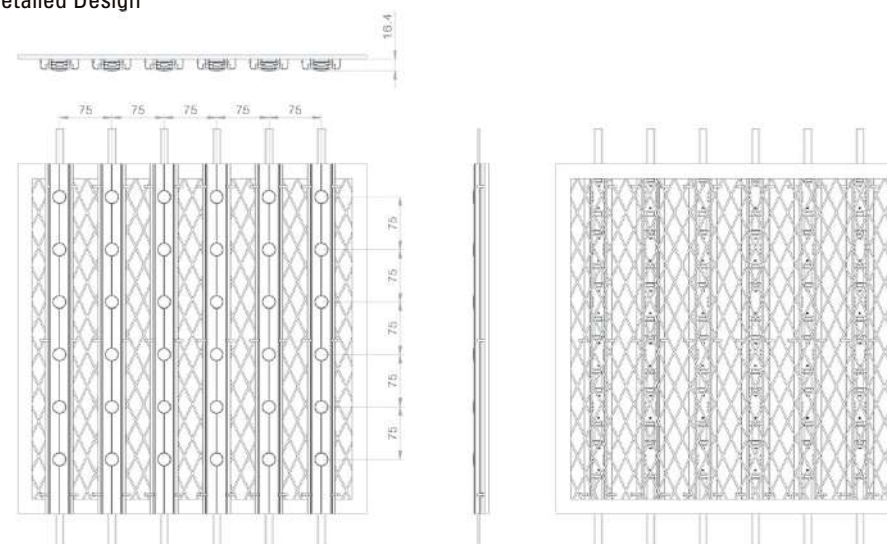
To celebrate 10th anniversary, Japanese Tokyo Disney Sea opened night performance Fantasmic, which is Walt Disney's 2nd night show after Walt Disney World in Florida. The show provided fantastic things to see with water and light. With the success of this promotion, they managed to have broader audiences and visitors.

System Volume	Ø10m x 15m (H)
Application Product	D3, Outdoor / Total 48,600 Nodes
On-site Installation	Mar. 2011, Japan

### Product



### Detailed Design



### Installation





### LIG Insurance HQ

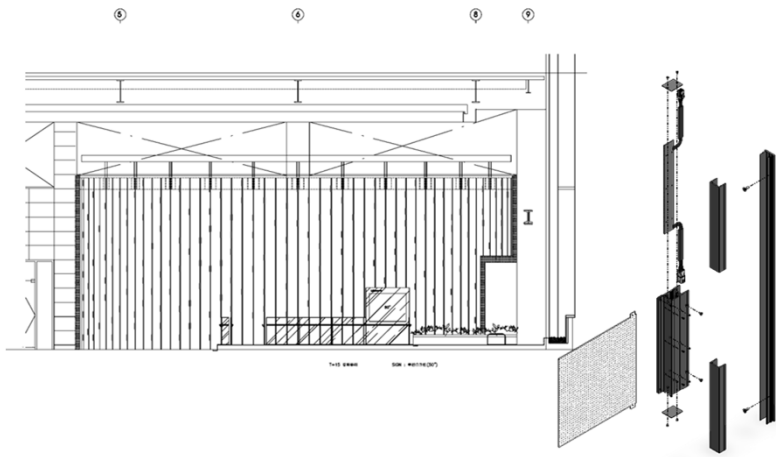
A glass sculpture is transformed into a dynamic piece of art that overcomes the static image by adopting a LED light guide plate (LGP). Distinguished from the image display through points and lines, this plane display expresses not only the color change but also various images.

System Volume	22.5m (W) x 9.8m (H)
Application Product	LGP(Light Guide Plate),200mm (W) x 250mm (H), Indoor / Total 300ea
On-site Installation	Apr. 2011, Korea

#### Product



#### Detailed Design



#### Installation



## LED DISPLAY

---

FACILITIES

ENTERTAINMENTS

OFFICE

COMMERCIAL

ART

SHOWROOM

FORUM

LAUNCHING SHOW

LIVE BROADCAST



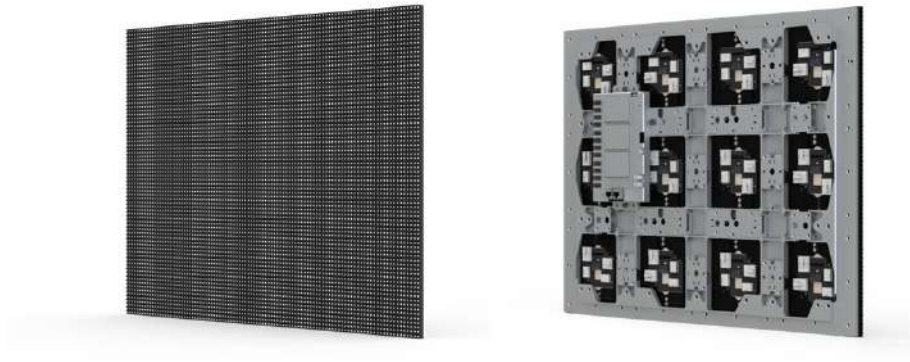


C'SEED 201 Outdoor LED TV

It is a high class outdoor 201" LED TV system with dimension 4,480mm wide x 2,440mm high. It is equipped with the world's largest HD TV screen (16:9 ratio, 201") which can rotate 270° , and high performance sound system of 12 broadband loudspeakers in 250 W and 3 subwoofers in 700W. Responding instantly to the press of a remote control button, it emerges from the ground swiftly and smoothly while staying under the ground when not in use. Reliable wind and temperature sensors prevent adverse outdoor conditions from damaging the C'Seed and the elegant appearance was designed by Porsche Design Studio.

System Volume	4.5m (W) x 4.6m (H) / 201inch Screen, 4.5 m (W) x 2.4 m (H)
Application Product	Winvision X6 (6.40mm), Outdoor
On-site Installation	2013~2014, Austria, Spain, France and Korea

Product



Detailed Design



Installation





Media Art Gallery, Han River

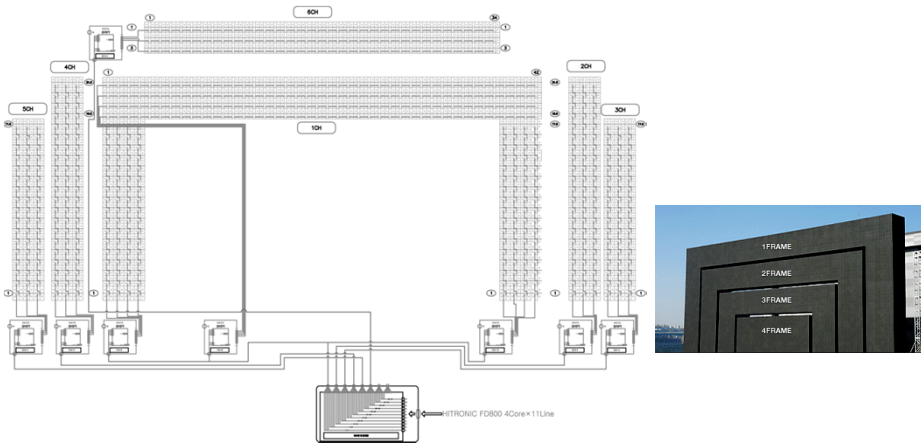
Media Art Gallery is a floating leisure facility in Han River just as Floating Island 1, 2 and three. This place is suitable for cultural art performance and distinguished events for its ultra large 1,000” LED display system and various direction systems such as lighting, sound, music fountain, laser and special effect devices. The LED display in Media Art Gallery can be divided into 4 frames and is made to be used as multi-phase display as well as moving back and forth on the stage and helps to direct various effects on the stage.

System Volume	23m (W) x 12m (H)
Application Product	Winvision 17, Outdoor / Total 2,050 Tiles (8,200 LDMs)
On-site Installation	May. 2010, Korea

Product



Detailed Design



Installation





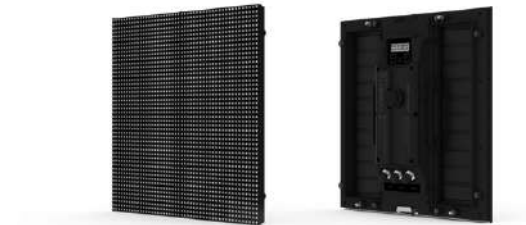


## The French Open, Roland-Garros 2012

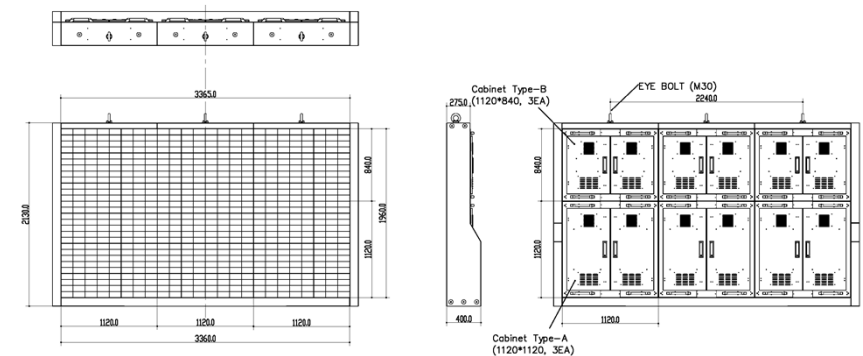
153" HD LED TV system has been installed in 2 locations in Roland-Garros where French Open takes place, one of the 4 world's Grand Slam Tennis Competition, providing the audiences with the vivid image of the competition, ceremony event an advertisement.

System Volume	[3.36m (W) x 1.96m (H), 153inch] x 2 site
Application Product	Winvision X5 (5.83mm), Outdoor / Total 84 LDMs
On-site Installation	May ~ Jun. 2012, France

### Product



### Detailed Design



### Installation





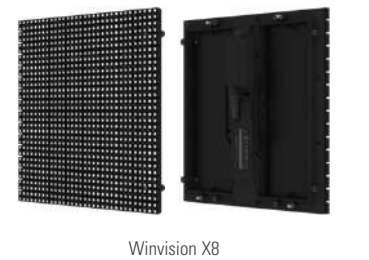


France Galop

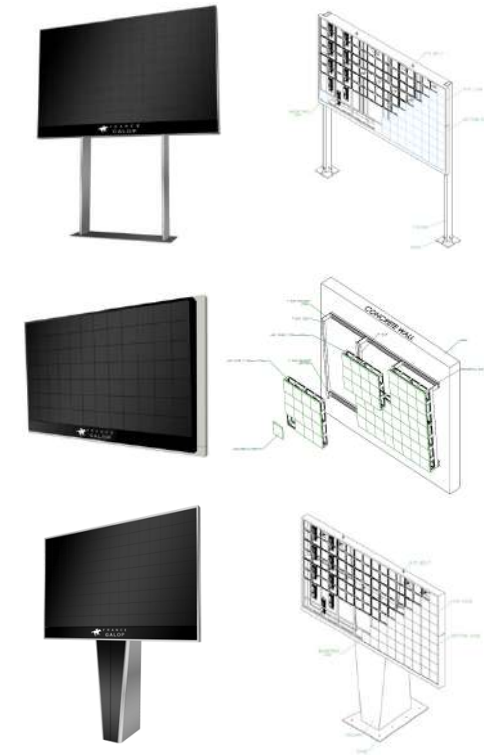
France Galp, who is authorized to operate major racecourses in districts in Paris, expected to have optimum display suitable for environmental characteristics of each racecourse to provide with dynamic moments of horse race and various events. Galaxia Electronics provided with outdoor LED media systems by creative structure designs that match each site.

System Volume	Saint Cloud: 3.36m (W) x 1.96m (H)
	Chantilly: 4.48m (W) x 2.52m (H)
	Auteuil: 4.48m (W) x 2.52m (H)
Application Product	Winvision X5 (5.83mm), Winvision X8(8.75mm) / Outdoor
On-site Installation	Nov. 2013, France

Product



Detailed Design



Installation



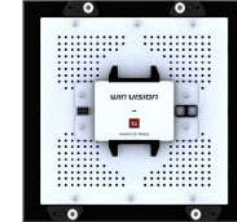
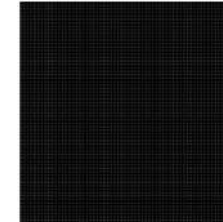


## Disney Mad T Party, Disney California Adventure

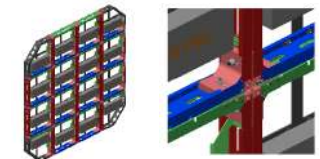
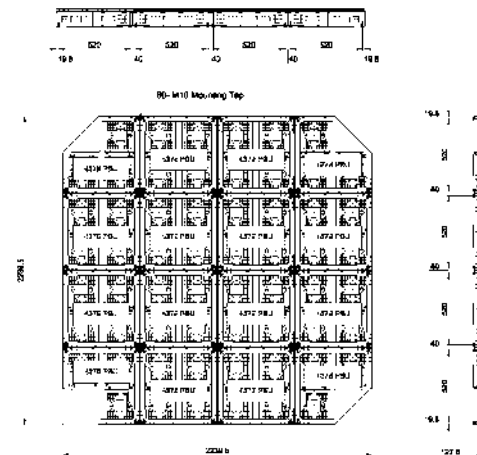
As one of the night events run by Disney California Adventure, Mad T Party provides with various fun points to experience. The pocket watch shaped screen installed on the entrance invites people to fantastic party with the mystic image display.

System Volume	Ø2.8m
Application Product	Winvision X4 (4.375 mm), Outdoor / Total 60 LDMs
On-site Installation	Jun. 2012, USA

### Product



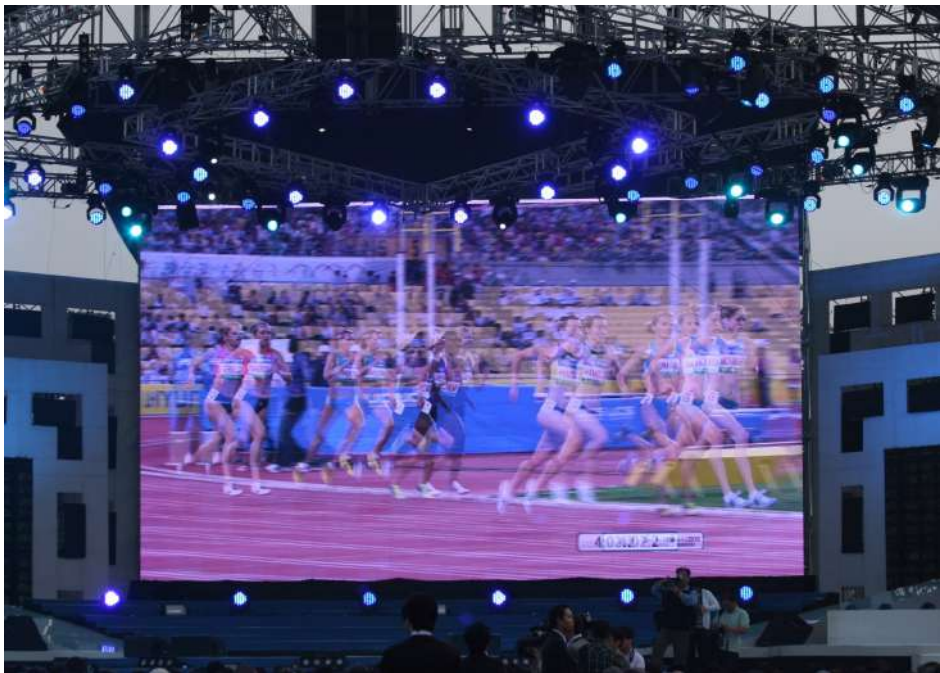
### Detailed Design



### Installation







**IAAF World Challenge 2010** (Colorful Daegu Pre-Championships)

2010 Daegu World Challenge was broadcasted live in 3D format on terrestrial TV channels for the first time in Korea. It was a special case that people enjoyed the vivid effect of the 3D sports broadcast through the large 3D display installed on the stage.

System Volume	9.6m (W) x 6m (H), 450inch
Application Product	Winvision G9 (9.375mm), Indoor / Total 640 LDMs, 160Tiles
On-site Installation	May, 2010, Korea

Product



3D Live broadcast







## LG Cinema 3D Game Festival

LG Cinema 3D Game Festival was the Korea's largest and only event that took place with the theme of game and 3D. Being used as the main screen in the event, Winvision G9 displayed various contents and game competitions in 3D format. Now the event has developed into "LG Cinema 3D World Festival" and has become the world's largest 3D experience event by playing not only games, but also movie, education and broadcasting in 3D.

System Volume	10.2m (W) x 5.4m (H)
Application Product	Winvision G9 (9.375mm), Indoor / Total 612LDMs, 153Tiles
On-site Installation	Apr. 2011, Korea

## Product



## 3D Live broadcast



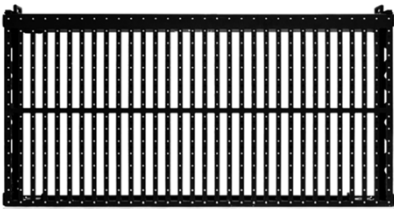


Tokyo Star Bank

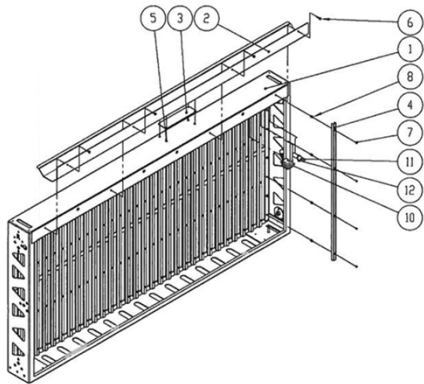
The multimedia system installed in Tokyo Starbank is designed to highlight the characteristics of the front glass. Being used day and night, guests and employees residing in the building feel comfort by LED display system with high transparency and moderate lightness. Furthermore, it attracts pedestrians’ attention with the unique animation in Japanese style.

System Volume	30m (W) x 8m (H)
Application Product	Winvision 37 (37.5mm) / Total 124 Tiles
On-site Installation	Jun. 2011, Japan

Product



Detailed Design



Installation





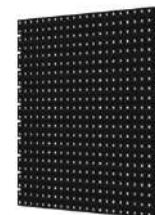


## Wataniya Telecom HQ

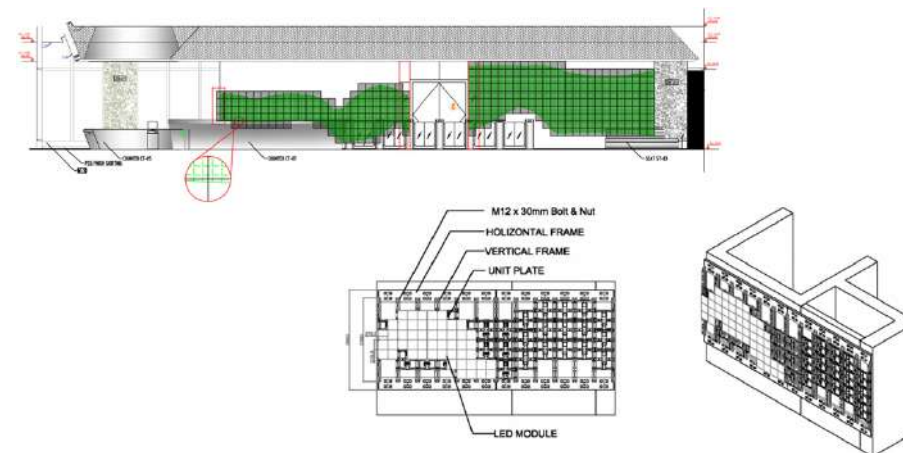
Wataniya Telecom which has unrivaled position in telecommunication market is the Kuwait's first private telecommunication service provider. Wataniya Telecom decorated the wall of entrance lobby in the head quarter with wave patterns which represent the meaning of the country name (a fortress built near water). It adds value to the interior design as the wave pattern has a function of media wall that displays various images and information to the visitors.

System Volume	6.72m (W) x 2.24m (H) x 2
Application Product	Winvision X12 (12.73mm), Indoor / Total 248 LDMs
On-site Installation	Jan. 2013, Kuwait

### Product



### Detailed Design



### Installation







M6 TV Channel

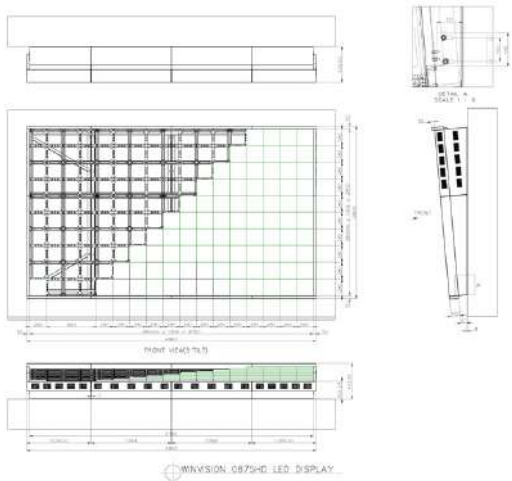
M6 TV Channel, one of the finest private broadcasting system in France has been equipped with our high resolution LED screen. With this, the screen broadcasts various TV programs and advertisements with clean and clear quality with high resolution.

System Volume	4.76m (W) x 2.8m (H), 217inch
Application Product	Winvision X8 (8.75mm), Outdoor / Total 170 LDMs
On-site Installation	Sep. 2012, France

Product



Detailed Design



Installation





Fukuoka, Nakas

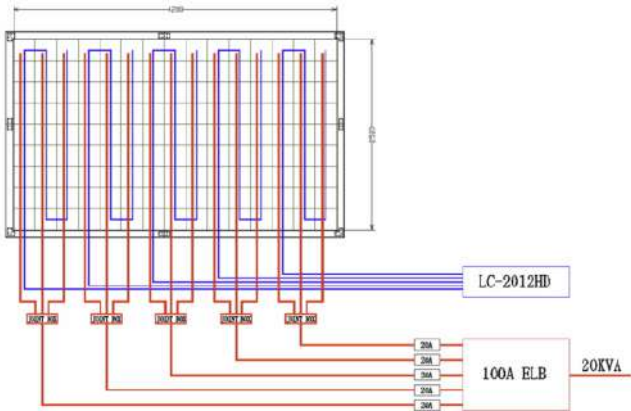
It is the outdoor media screen for advertisement installed on the exterior façade of a building.

System Volume	3.08m (W) x 2.24m (H), 150inch
Application Product	Winvision VX8 (8.75mm), Outdoor / Total 88 LDMs
On-site Installation	Apr, 2012, Japan

Product



Detailed Design



Installation







### Osaka ROUND ONE, Osaka Namba

It is the outdoor media screen for advertisement installed on the exterior façade of a building.

System Volume	4.2m (W) x 2.52m (H), 193inch
Application Product	Winvision VX8 (8.75mm), Outdoor / Total 135 LDMs
On-site Installation	Mar. 2012, Japan

#### Product



#### Installation







Ann Dancing, Julian Opie

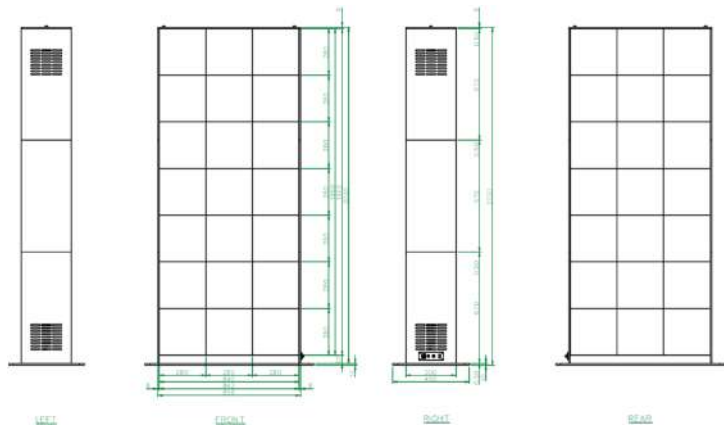
Julian Opie’s digital art “Ann Dancing” is installed on the global business building in which multiple foreign companies reside. A double sided screen is use considering pedestrians’ path and unique art design and color of Julian Opie’s own is expressed for this pop art.

System Volume	858mm (W) x 2,030mm (H) x 2 sides
Application Product	Winvision X10 (10 mm), Outdoor / Total 42LDMs
On-site Installation	Mar. 2014, Korea

Product



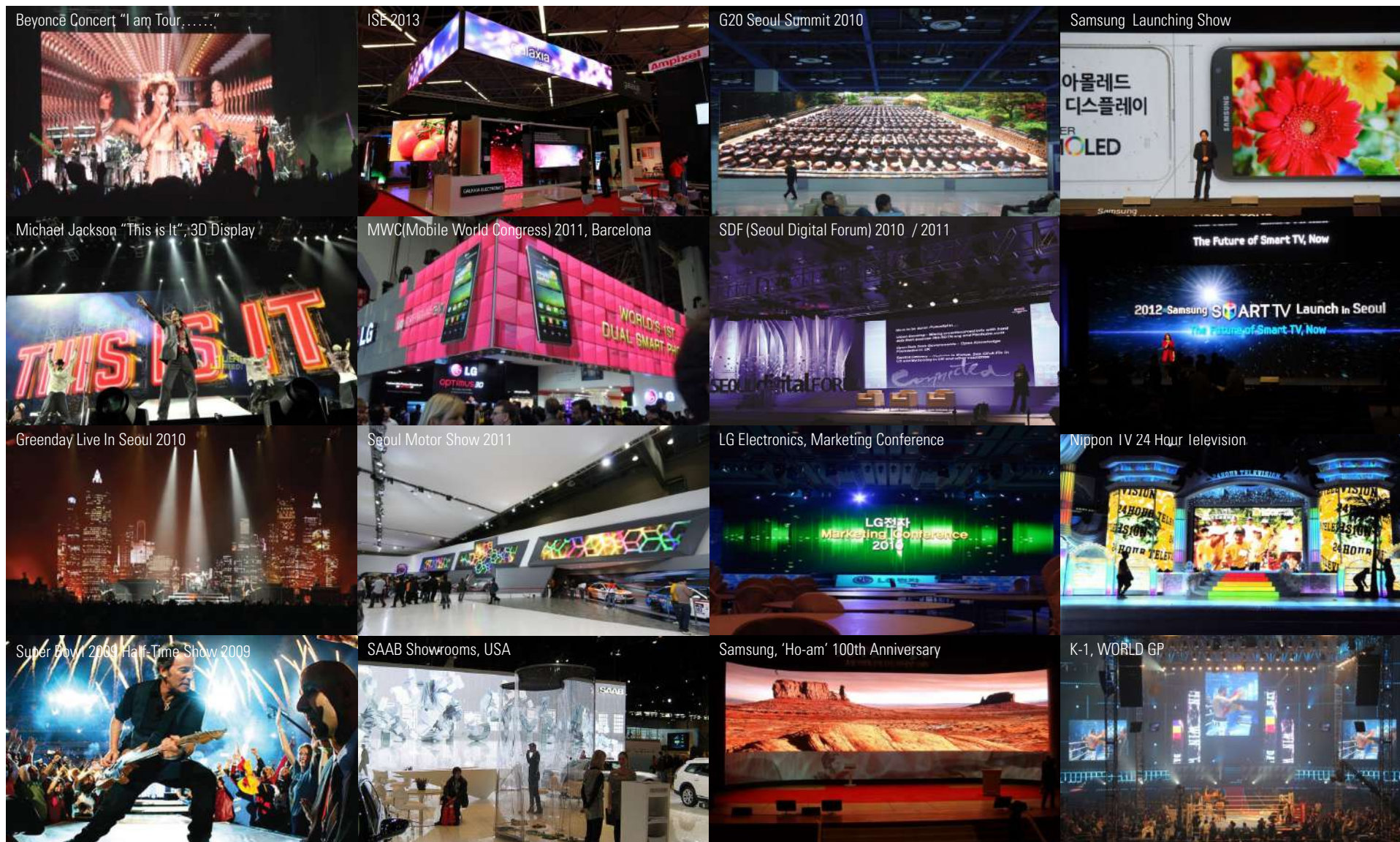
Detailed Design



Installation







- Concert

- Display, Showroom

- Summit, Forum

- Launching Show, Live broadcast

## 2014 | REFERENCE DETAIL

11F, Suseo Bldg, 281, Gwangpyeong-ro, Gangnam-gu, Seoul, Korea 135-884

**T** 02-6363-0308 | **F** 02-6181-3818

**mail** [mkt@galaxia.co.kr](mailto:mkt@galaxia.co.kr)

[www.galaxialed.com](http://www.galaxialed.com)